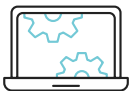




# EPAM Sitecore® Experience Commerce™ Quick Start

In today's rapidly changing environment, many B2B and B2B2C brands – that once solely relied on offline channels or resellers – are realizing they need to shift their business model to include Direct-To-Consumer (D2C) experiences in order to stay competitive. To effectively transition to this new approach, companies need to quickly and strategically create a personalized commerce experience and start building digital relationships with customers.

Leveraging its deep Sitecore expertise as a Platinum Sitecore Partner, EPAM developed Sitecore Experience Commerce™ (XC) Quick Start, a turnkey solution that enables customers to deploy Sitecore XC in just eight weeks. This solution enables companies to:



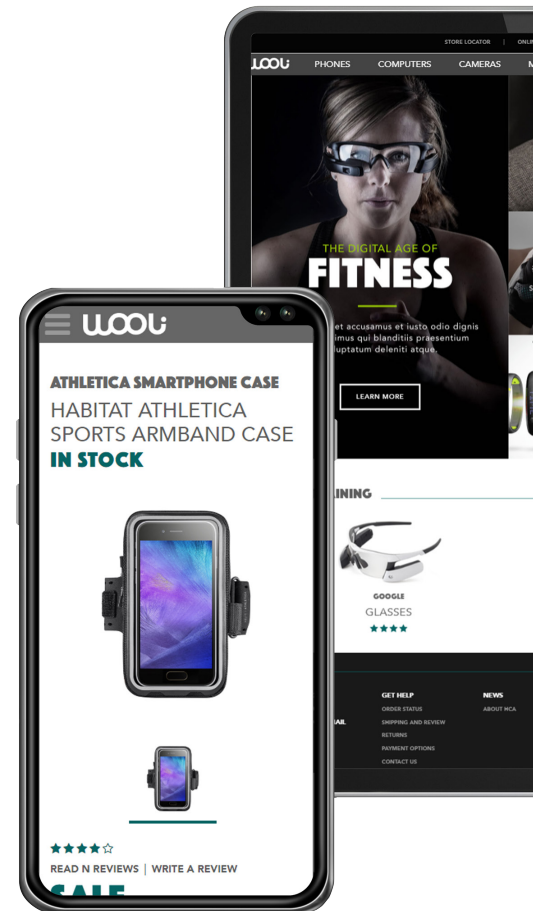
Deploy a standalone, brand new eCommerce storefront quickly



Shift to a D2C or business-to-consumer model to open new revenue streams



Leverage an extensible platform that can be further integrated or customized in the future



**START THE CONVERSATION TODAY**  
[WWW.EPAM.COM](http://WWW.EPAM.COM) | [SALES@EPAM.COM](mailto:SALES@EPAM.COM)

<b>USER EXPERIENCE</b>	<b>CATALOG BROWSING &amp; POP</b>		<b>CHECKOUT</b>		<b>ACCOUNT</b>	
	Responsive Design	Product Search	Shipping Cart		Account Registration	
	Navigation	Content Pages	Authenticated Checkout/ Guest Checkout		Login/Logout	
	Home Page/ Landing Page	Product Listing Page (PLP) - Category	Shipping Information	Billing Information	Forgot Password/ Password Reset	Account/Profile Management
	Product Detail Page (PDP)	Custom user experience development	Payment Information	Confirmation	Order History	Order Details
<b>BACKEND</b>	<b>CONTENT MANAGEMENT</b>		<b>INTEGRATIONS</b>		<b>EMAIL TEMPLATES</b>	<b>NON-FUNCTIONAL</b>
	Content Authoring/ Publishing	Basic Approval WorkFlow	1 x Tax Provider	PIM/DAM	Account Registration	Multisite
	Template/Component Management	Basic Personalization (Personalization Ready)	1 x Payment Provider	CRM and Email Automation Tools	Email Verification	Multilingual
	Taxonomy Management	SEO	1 x Shipping Provider	UGC Tools (Bazaarvoice, Reevo, etc.)	Password Reset	Multi-Currency
	Users & Roles		Multiple Providers for Above	ERP Systems	Order Confirmation	

## BUILT-IN FEATURES:

- Out-of-the-box eCommerce storefront within your brand standards
- Modern, headless Sitecore JavaScript Services (JSS)-based approach, enabling performance and future flexibility
- Extensible platform with multisite or multilingual functionality
- Personalization-ready
- Integration with one plugin provider respectively, including:
  - Shipping
  - Tax
  - Payment
- Authenticated and guest checkout
- Pre-built email templates, including:
  - Account registration
  - Email verification
  - Order confirmation
  - Password reset

## ADDITIONAL EXTENSIONS AVAILABLE

- Custom user experience/visual design
- Integration with external PIM/DAM systems
- Integration with external CRM and email automation tools
- Integration with UGC tools (BazaarVoice, Reevo, etc.)
- Integration with ERP systems
- Installation and configuration of multiple providers for shipping, tax and payment
- Multi-currency support

## TECHNOLOGY OVERVIEW

---

### SOFTWARE:

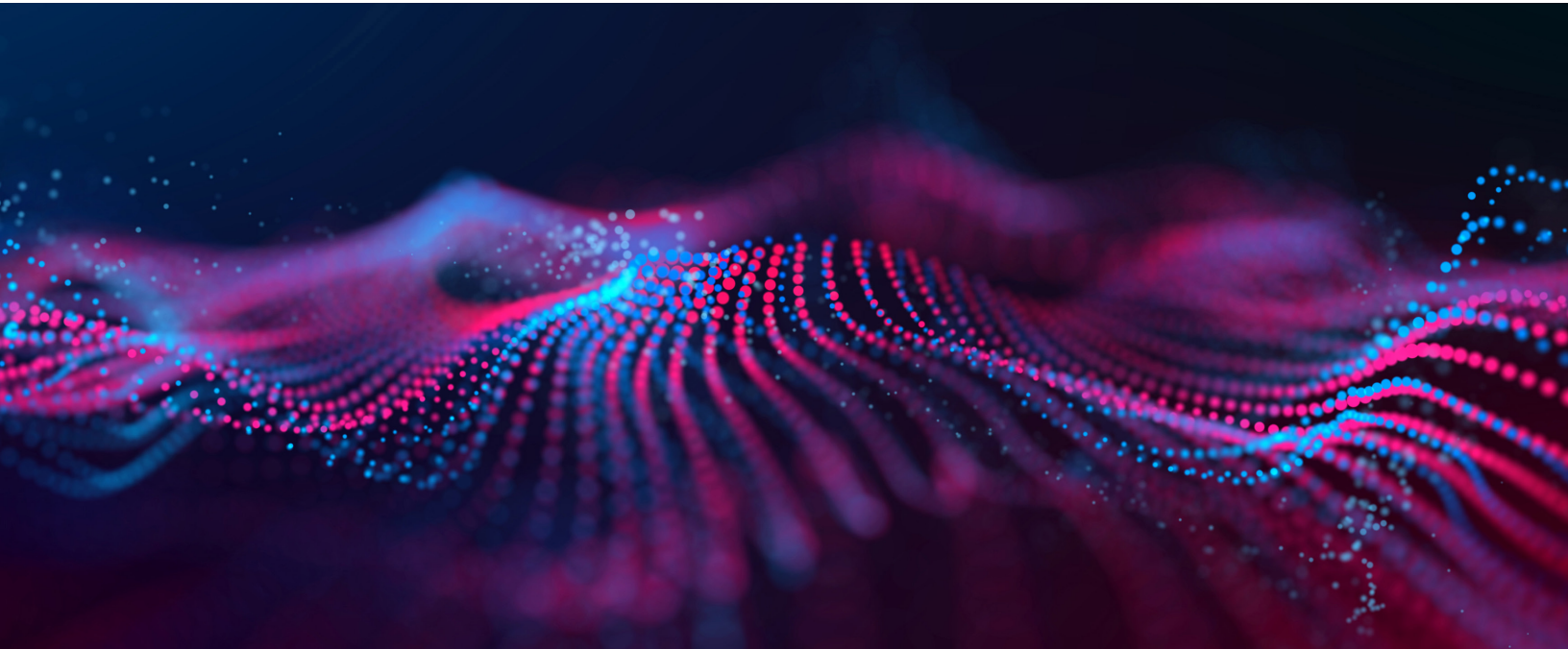
- Sitecore Experience Platform 9.3
- Sitecore XC 9.3
- JSS 13
- Glass Mapper 5 (open source)
- FakeDB 3.0.0 (open source)
- Sitecore Powershell Extensions 5.1 (open source)

### HOSTING & SERVICES:

- Azure Platform-as-a-Service
- Azure Search
- Azure Cache for Redis
- Azure DevOps

### EPAM ACCELERATORS USED:

- EPAM Sitecore Engineering Excellence Accelerator for Infrastructure-as-Code: modern deployment using templated Terraform-based configuration to provision Azure infrastructure
- EPAM Sitecore Engineering Excellence Accelerator for CI/CD: templated configuration for Azure DevOps build and deployment pipelines
- EPAM provides a prebuilt Plugin Library for Sitecore XC 9 where the customer can select one from each of the following: Payment Provider, Shipping Provider, Tax Provider
- EPAM Sitecore Headless Commerce Accelerator for Sitecore XC: open source solution that provides a professionally branded, custom storefront UI with code based on REACT and Sitecore JSS



### ACCELERATE YOUR COMMERCE PLATFORM TODAY

As a Sitecore Platinum Partner with Sitecore XC specializations in North America and EMEA, EPAM can help you deploy a new commerce solution in just eight weeks. Contact us today to start the conversation!

[SALES@EPAM.COM](mailto:SALES@EPAM.COM)



SITECORE